



SWIMMING POOL HEAT PUMPS EVOLUTION SERIES

PHNIX SWIMMING POOL HEAT PUMPS---EVOLUTION SERIES is positioned as a high end product specially for higher pool heating demand. With pleasant pool water temperature, people can enjoy swimming from the beginning of spring to the end of autumn.

FEATURES

HIGH WORK EFFICIENCY

At working condition of 24°C/19°C (DB/WB), the COP of PHNIX EVOLUTION SERIES reaches as high as 5.55, which realizes great energy saving effect for customers. In the meantime, this series of pool heat pumps allow people to have a longer swimming season in a year.

COP5.55
at 24°C/19°C
(DB/WB)

APP SMART CONTROL

PHNIX APP Smart Control is a newly developed control method, officially launched in the market at the beginning of 2014. Applying this fashion control method to PHNIX EVOLUTION SERIES, when users are not at home, they can also control the pool temperature just by their smart phones.



METAL/PLASTIC CASING

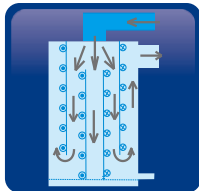
PHNIX offers metal or plastic casing based on your preference. The plastic casing has obvious advantages in anti-corrosion and unit net weight, while the metal casing looks more elegant and protects the inside components better.



DETAILS

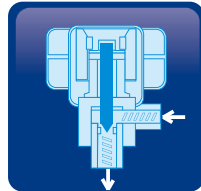
1. TWO TITANIUM COILS HEAT EXCHANGER

PHNIX Patented Two Titanium Coils Heat Exchanger features extended heat exchanging surface with higher efficiency.



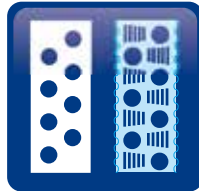
2. ELECTRIC EXPANSION VALVE

Smartly adjust the refrigerant flow rate, the units are sure to work with high efficiency at all time.



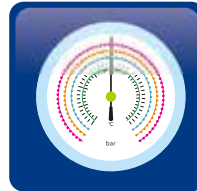
3. RIPPLE FIN AIR EXCHANGER

Heat exchanging surface extended, heat exchanging effect is improved and the risk of frosting is reduced.



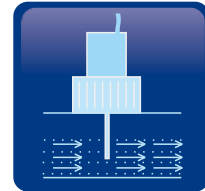
4. PRESSURE PROTECTION

With high pressure and low pressure protection, heat pumps are protected at inappropriate working conditions.



5. WATER FLOW SWITCH

The water flow switches designed by PHNIX are with high sensitivity feature.



PARAMETERS(50HZ)

Unit		020-U	030-U	040S-U	050S-U	060S-U
Cooling Capacity	kW	5.8	8.5	11.5	14.5	17
	BTU/h	20000	29000	40000	49500	57800
Heating Capacity	kW	8.8	13	17.5	21	25
	BTU/h	30000	45000	60000	72000	85000
Power Input	kW	2.1/1.9	3.1/2.9	4.1/3.8	5.2/4.6	5.7/4.9
Running Current	A	9.6/8.6	14.1/13.2	7.3/6.7	9.2/8.2	10.2/8.7
Power Supply		220-240V/50HZ		380-415V/3N/50HZ		
Refrigerant		R407C				
Compressor Number		1	1	1	1	1
Compressor		Rotary		Scroll		
Heat Exchanger		Titanium				
Fan Number		1	1	1	1	1
Fan Direction		Vertical				
Noise	dB(A)	51	54	54	56	56
Water Connection	mm	50	50	50	50	50
Water Flow Volume	m ³ /h	2	3	4	5	6
Water Pressure Drop	kPa	10	10	12	12	12
Unit Dimension	mm	600*575*770		765*735*860		795*765*860
Net Weight	kg	58	86	93	102	116
Suitable For	m ³	12	19.5	30	34.8	42
Swimming Pool Size	m ²	8	13	20	23	28

Cooling: Ambient temp.(DB/WB): 43°C/32°C, Water temp.(In): 32°C;

Heating: Ambient temp.(DB/WB): 24°C/19°C, Water temp.(In): 27°C.

The above data is for reference only; specific data is subject to the product nameplate.

GUANGDONG PHNIX ECO-ENERGY SOLUTION LTD.

TEL: +86-20-39067742 FAX: +86-20-39067770

E-mail: phnixen@phnix-e.com Website:www.phnix-e.com

